



an eviden business

Computer Vision Platform

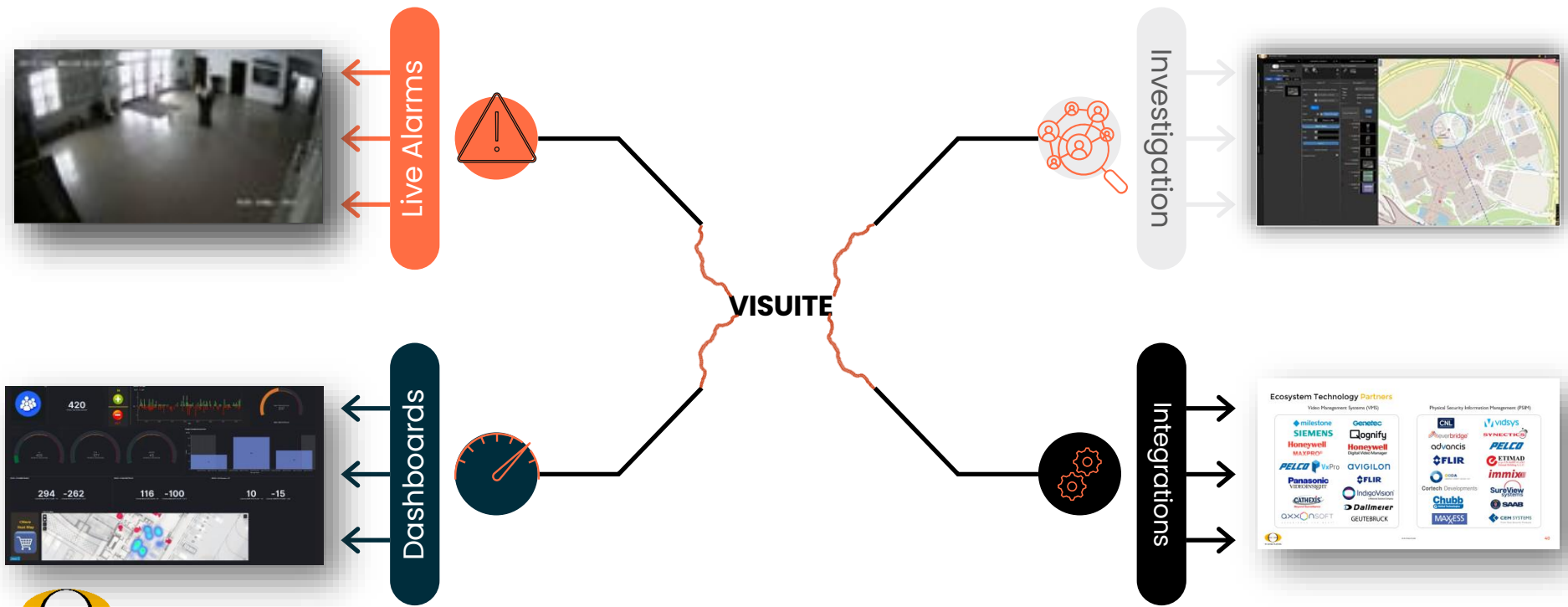
Ipsotek VISuite

EVIDEN

an atos business

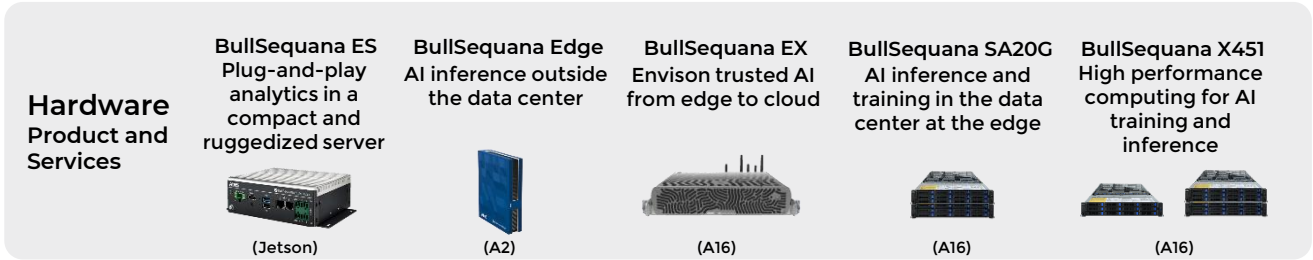
VISuite Value

ROADMAP . PROJECTS . RESILIENCE . INTEGRATION

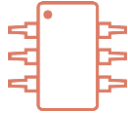


Eviden Computer Vision Platform

The highly scalable end-to-end computer vision platform



ADVANCED VIDEO ANALYTICS



25 Years Research,
Development and
Experience



Mega Project Experience
8,000+ Streams



750+ Projects
44 Countries



140+ Airport Projects



50+ Nuclear, Oil &
Gas, and Energy Sites



160+ Government,
CPNI, and Smart City
Projects



110+ Retail projects

Ipsotek Experience



Value Proposition



Security

Operations

Health and Safety

Business Intelligence

VISuite V11 – AIVA Engine

Artificial Intelligence

Automatic Calibration

Accurate Tracking in Crowded Areas

High-Fidelity Object Recognition & Classification

Model Accuracy Continuously Improving

Video Analytics

Real-time, High Framerate

GIS Calibration and Object Tracking

Reduced Server Loading

Accuracy



Efficiency



AIVA

- AI triggered by VA only when needed
- Reduces server overhead without compromising accuracy
- 100 4CIF or 60 HD streams analyzed per Nvidia A16 GPU





Ipsotek at the Forefront of the AI Revolution

AI technology offers many advantages. Ipsotek has successfully deployed this in its Video Analytics by:

- Offering higher detection accuracy and lower false alarms. Typical example showed reduction of false alarms by 40x once AI is introduced
- Ease of deployment by using AI for automatic scene segmentation and calibration
- New capabilities in detecting social distancing and face mask to target COVID mitigation projects
- High quality reports for management to take decisive actions
- Detection of people and vehicles even in highly crowded and congested scenes leading
- Effective crowd and traffic management
- Tracking of people in crowded areas allowing multi camera tracking and investigation



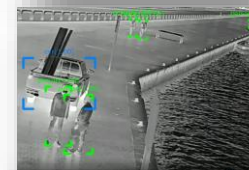
AIVA - Metadata



Object ID	11578	Object ID	11685
Object Type	Person	Object Type	Van
Camera No	0134	Camera No	0083
Latitude	51.42062	Latitude	51.42032
Longitude	-0.20895	Longitude	-0.20925
Time	1614256855	Time	1614256985
Velocity	1.3	Velocity	6.7
Direction	56	Direction	234
Associated Objects	Backpack	Associated Objects	--
Upper Body Colour	Red	Object Colour	Red
Lower Body Colour	Black		

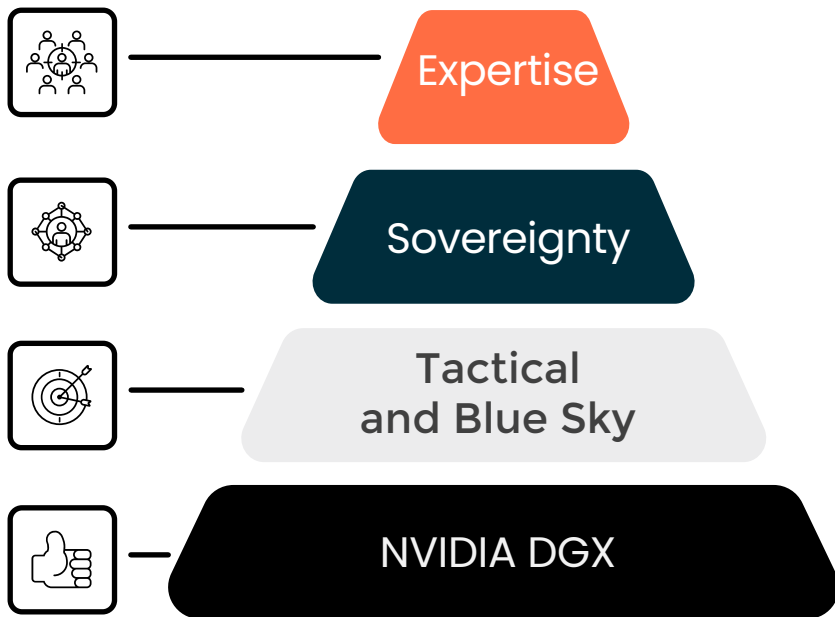
Pretrained AI Models

Model	Classes	Description
General Detector	28	Main detector of primary classes including people, vehicles, weapons etc
Human Attributes	30	Human Attributes including gender, age, clothing type, colour and PPE
Reidentification	N/A	128 dimensional vector providing unique identifier
Density	1	Head detector for extremely crowded spaces
Thermal Detector	4	Thermal spectrum detector in low crowded spaces
Face Detection	1	Face detector
Face Identification	N/A	128 dimensional vector providing unique identifier
Face Attributes	8	Emotion, age and gender estimation
Scene Segmentation	18	Road, Pavement, Platform, Track etc...
Skeleton Detector	15	Human skeleton estimation model
LPR	N/A	License Plate Recognition - supporting majority of countries in the world



Computer Vision Labs

Experts in bespoke AI/ML solutions



Expertise

More than 100 years of combined experience in machine learning and Artificial Intelligence applied to a variety of computer vision applications.

Sovereignty

Eviden CV Labs are located in five continents with labs in US, Brazil, France, UK, Middle East and Singapore. Providing local, agile and effective support to our customers.

Tactical and Blue Sky

Eviden CV Labs are engaged in bespoke project delivery developments while maintaining a clear Blue Sky innovation vision.

NVIDIA DGX

Eviden CV Labs take full advantage of NVIDIA's DGX platform for data pre-processing, model training and validation.

PRIVACY – GDPR – AI ACT

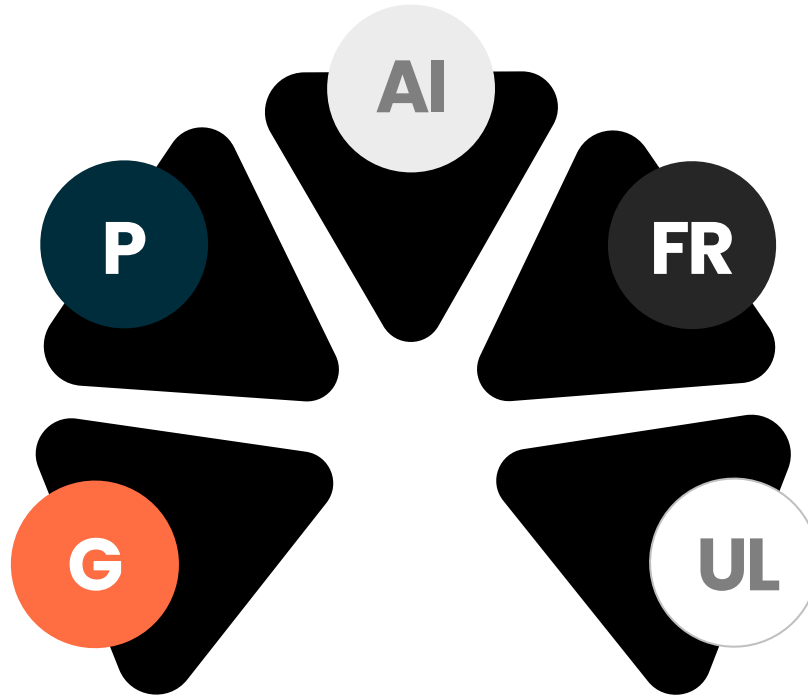
Make AI safe and transparent

PRIVACY

Face blurring
Body Blurring
Vehicle Blurring

GDPR

Customizable Retention
Policy and Clear Rules
for Media Storage



AI Act

Transparent and explainable AI, trained by Humans

Face Recognition

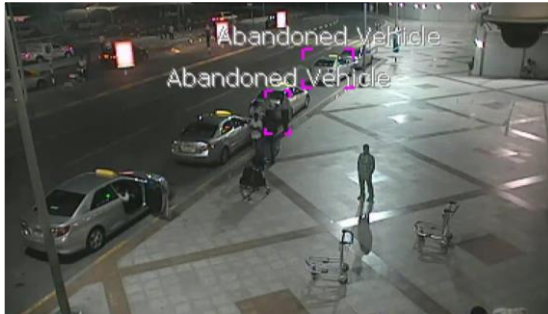
Deploy VISuite with or without Face Recognition capability

Unsupervised Learning

Avoid unsupervised learning to stop models from drifting and aging

Patented Scenario-Based Detection

- Configuration Interface for VISuite
- Select from 65+ Modules
- Each Module Individually Configured
- Combine Using IF/AND/OR/NOT Logic
- Full Rule Can Be Exported As Template
- 80+ Proven Templates Available
- Up to 32 Rules on 1 Camera



Configuration interface for a rule named "Abandoned Vehicle". The interface shows a flowchart of conditions and events, a "Zone Settings" panel, and a "VISuite Artificial Intelligence" module selection grid.

Flowchart:

- Condition 1: Timeout: 30 Sec, Func: AND
- Condition 2: Timeout: 30 Sec, Func: AND
- Condition 3: Func: AND
- Event 1: Duration: 0 Sec, Func: AND
- Event 2: Duration: 0 Sec, Func: AND
- Event 3: Duration: 0 Sec, Func: AND
- Event 4: Duration: 0 Sec, Func: AND
- Event 5: Duration: 0 Sec, Func: AND
- Event 6: Duration: 0 Sec, Func: AND
- Event 7: Duration: 0 Sec, Func: AND
- Event 8: Duration: 0 Sec, Func: AND
- Event 9: Duration: 0 Sec, Func: AND
- Event 10: Duration: 0 Sec, Func: AND
- Event 11: Duration: 0 Sec, Func: AND
- Event 12: Duration: 0 Sec, Func: AND
- Event 13: Duration: 0 Sec, Func: AND
- Event 14: Duration: 0 Sec, Func: AND
- Event 15: Duration: 0 Sec, Func: AND
- Event 16: Duration: 0 Sec, Func: AND
- Event 17: Duration: 0 Sec, Func: AND
- Event 18: Duration: 0 Sec, Func: AND
- Event 19: Duration: 0 Sec, Func: AND
- Event 20: Duration: 0 Sec, Func: AND
- Event 21: Duration: 0 Sec, Func: AND
- Event 22: Duration: 0 Sec, Func: AND
- Event 23: Duration: 0 Sec, Func: AND
- Event 24: Duration: 0 Sec, Func: AND
- Event 25: Duration: 0 Sec, Func: AND
- Event 26: Duration: 0 Sec, Func: AND
- Event 27: Duration: 0 Sec, Func: AND
- Event 28: Duration: 0 Sec, Func: AND
- Event 29: Duration: 0 Sec, Func: AND
- Event 30: Duration: 0 Sec, Func: AND
- Event 31: Duration: 0 Sec, Func: AND
- Event 32: Duration: 0 Sec, Func: AND
- Event 33: Duration: 0 Sec, Func: AND
- Event 34: Duration: 0 Sec, Func: AND
- Event 35: Duration: 0 Sec, Func: AND
- Event 36: Duration: 0 Sec, Func: AND
- Event 37: Duration: 0 Sec, Func: AND
- Event 38: Duration: 0 Sec, Func: AND
- Event 39: Duration: 0 Sec, Func: AND
- Event 40: Duration: 0 Sec, Func: AND
- Event 41: Duration: 0 Sec, Func: AND
- Event 42: Duration: 0 Sec, Func: AND
- Event 43: Duration: 0 Sec, Func: AND
- Event 44: Duration: 0 Sec, Func: AND
- Event 45: Duration: 0 Sec, Func: AND
- Event 46: Duration: 0 Sec, Func: AND
- Event 47: Duration: 0 Sec, Func: AND
- Event 48: Duration: 0 Sec, Func: AND
- Event 49: Duration: 0 Sec, Func: AND
- Event 50: Duration: 0 Sec, Func: AND
- Event 51: Duration: 0 Sec, Func: AND
- Event 52: Duration: 0 Sec, Func: AND
- Event 53: Duration: 0 Sec, Func: AND
- Event 54: Duration: 0 Sec, Func: AND
- Event 55: Duration: 0 Sec, Func: AND
- Event 56: Duration: 0 Sec, Func: AND
- Event 57: Duration: 0 Sec, Func: AND
- Event 58: Duration: 0 Sec, Func: AND
- Event 59: Duration: 0 Sec, Func: AND
- Event 60: Duration: 0 Sec, Func: AND
- Event 61: Duration: 0 Sec, Func: AND
- Event 62: Duration: 0 Sec, Func: AND
- Event 63: Duration: 0 Sec, Func: AND
- Event 64: Duration: 0 Sec, Func: AND
- Event 65: Duration: 0 Sec, Func: AND
- Event 66: Duration: 0 Sec, Func: AND
- Event 67: Duration: 0 Sec, Func: AND
- Event 68: Duration: 0 Sec, Func: AND
- Event 69: Duration: 0 Sec, Func: AND
- Event 70: Duration: 0 Sec, Func: AND
- Event 71: Duration: 0 Sec, Func: AND
- Event 72: Duration: 0 Sec, Func: AND
- Event 73: Duration: 0 Sec, Func: AND
- Event 74: Duration: 0 Sec, Func: AND
- Event 75: Duration: 0 Sec, Func: AND
- Event 76: Duration: 0 Sec, Func: AND
- Event 77: Duration: 0 Sec, Func: AND
- Event 78: Duration: 0 Sec, Func: AND
- Event 79: Duration: 0 Sec, Func: AND
- Event 80: Duration: 0 Sec, Func: AND
- Event 81: Duration: 0 Sec, Func: AND
- Event 82: Duration: 0 Sec, Func: AND
- Event 83: Duration: 0 Sec, Func: AND
- Event 84: Duration: 0 Sec, Func: AND
- Event 85: Duration: 0 Sec, Func: AND
- Event 86: Duration: 0 Sec, Func: AND
- Event 87: Duration: 0 Sec, Func: AND
- Event 88: Duration: 0 Sec, Func: AND
- Event 89: Duration: 0 Sec, Func: AND
- Event 90: Duration: 0 Sec, Func: AND
- Event 91: Duration: 0 Sec, Func: AND
- Event 92: Duration: 0 Sec, Func: AND
- Event 93: Duration: 0 Sec, Func: AND
- Event 94: Duration: 0 Sec, Func: AND
- Event 95: Duration: 0 Sec, Func: AND
- Event 96: Duration: 0 Sec, Func: AND
- Event 97: Duration: 0 Sec, Func: AND
- Event 98: Duration: 0 Sec, Func: AND
- Event 99: Duration: 0 Sec, Func: AND
- Event 100: Duration: 0 Sec, Func: AND

Zone Settings:

- Zone Name: Zone1
- Preset AZI: Ground Plane
- Function: Exits Zone
- In Zone Period (Sec): 1
- Stationary Period (Sec): 0
- Movement Pattern: Any
- Lower Speed Limit (mph): 0
- Upper Speed Limit (mph): 0
- Lower Average Speed Limit (mph): 0
- Upper Average Speed Limit (mph): 0
- Number Plate Recognition: Not Required
- Zone Projection Plane: Ground Plane
- Classification: Unk
- Trigger on (Object): ALL
- Object colour: (Color wheel)
- Object class: (List of classes)
- Statistics Functions: (List of functions)

VISuite Artificial Intelligence:

Type	Module	Module	Module	Module
Proximity Zone	In Zone	Proximity Advanced	Object Introduced	Face Detection
Proximity Zone	Zone Intersection Counter	People Counting	Object Removed	Face Recognition
Proximity Zone	From Zone A to B	AI Detector	Direction of Motion	Face Mask
Proximity Zone	In Zone A NOT B	AI Counter	Colour Detector	Unique Face
Proximity Zone	In Zone A AND B	Change Detection	Overcrowding	Repeated Face
Proximity Zone	Appears In Zone	Object Introduced	Congestion	Face Missing
Proximity Zone	Disappears In Zone	Object Removed	Other Functions	Journey Time
Proximity Zone	Enters Zone	Direction of Motion	Auxiliary Inputs	Happy Face
Proximity Zone	Exits Zone	Colour Detector	No Video	Face Blurring
Proximity Zone	Travels In Zone	Overcrowding	Poor Video	Number Plate Detection
Proximity Zone	Traversal Time and Speed	Congestion	Scene Change	Number Plate Recognition
Proximity Zone	No Track Zone	Activity	Out of Preset	Average Speed
Proximity Zone	Dwell Time	Smoke		
Proximity Zone	Proximity Detection	Crowd Behaviour		

External Asset Protection

- Perimeter Protection
- PTZ Tracking
- Vehicle Intrusion/Illegal Parking
- Intrusion Detection
- Loitering Detection

Asset & Site Monitoring

- Forensic Search
- Out of Hours Intrusion
- PPE Detection
- Slip & Fall Detection
- Smoke Detection
- Live GIS Location Tracking
- Person Running Detection
- Vehicle Intrusion/Speeding

Secure Buildings

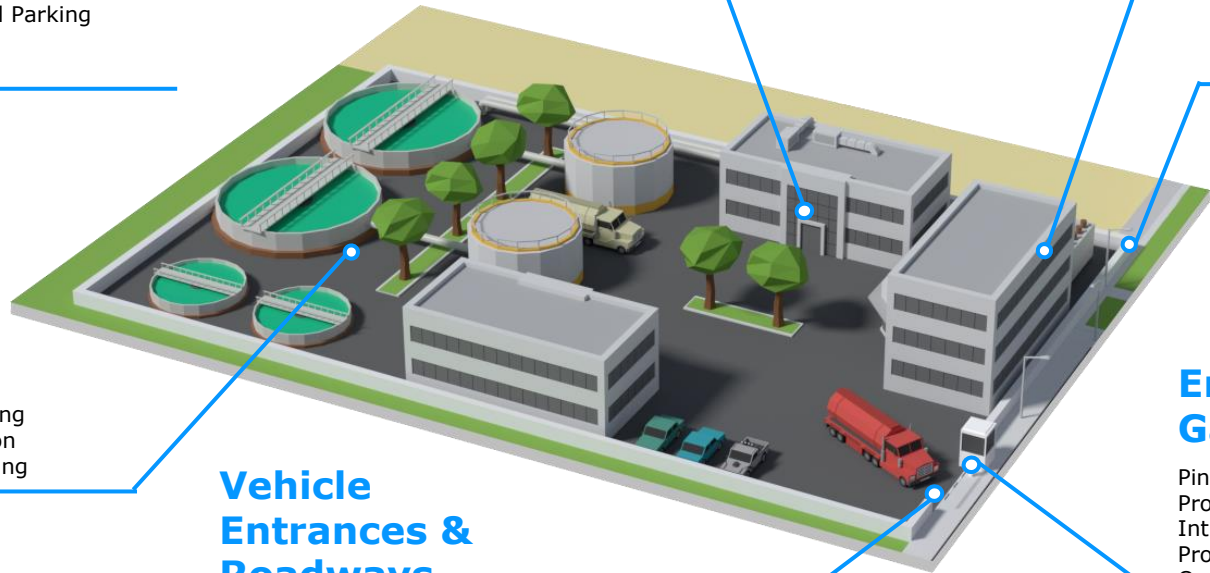
- Intrusion Detection
- Perimeter Protection
- Forensics & Investigation

Data rooms

- Face Recognition Watchlist
- Tailgating Detection
- Intrusion Detection
- Smoke Detection

Perimeter

- Perimeter Protection
- PTZ Tracking
- Vehicle Intrusion/Illegal Parking
- Intrusion Detection
- Loitering Detection



Vehicle Entrances & Roadways

- ANPR Watchlist
- Vehicle Intrusion
- Wrong-way Detection
- Face Recognition
- Abandoned Vehicle Detection

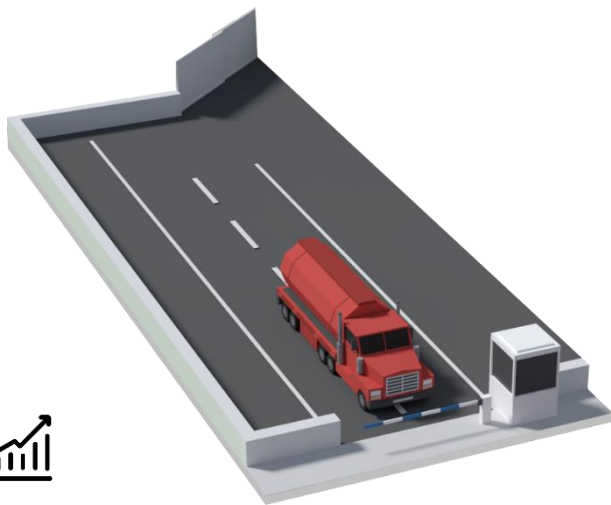
Entrances & Gatehouses

- Pinch-Point People Counting
- Proximity Detection
- Intrusion Detection Out-of-hours
- Proximity Monitoring
- Queue Monitoring

Perimeter Protection

Protecting an energy or utility site's perimeter and restricted zones is key to ensuring the smooth running of all operational areas. Any intrusion attempt to these critical infrastructures could represent a threat to business operations and to the safety of personnel.

VISuite work seamlessly with video, thermal and IR surveillance CCTV cameras at ranges of up to 1km and provides real-time alerts for perimeter and intrusion breaches.



Improve Security
Response Time



Reduce
Operator
Workload



Automating Perimeter and Intrusion Monitoring

One of the standard functions in VISuite is the automatic control of PTZ cameras when an alert is generated on an associated fixed camera. This allows wide areas to be monitored reliably without manual intervention.

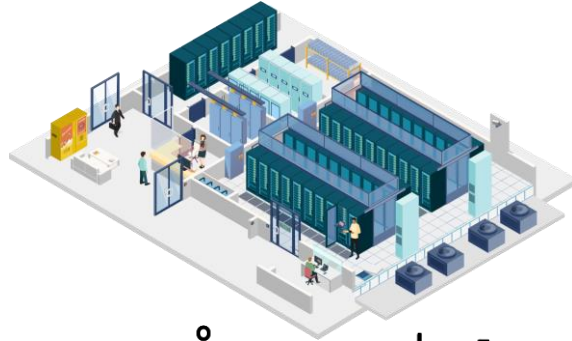
VISuite provides visual, metadata and PTZ camera data when an intrusion is detected, which is fed to the control room for operators to manage.

When an operator takes control of a PTZ camera joystick, VISuite automatically relinquishes control.

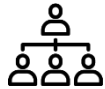
Secure Buildings

The risk and impact of hostile intrusion is high not only at critical sites, but also at secure offices and datacenters which enable safe energy and utility operation. With many high-profile cyber breaches and several initiated from physical access to unsecured offices and substations, operators must take action to protect critical company assets.

Ipsotek's Scenario Based Rule Engine allows the user to create customizable solutions that can be rapidly deployed to multiple cameras. Key buildings are protected through various behavioral-detection capabilities, Face Recognition and instant alarms which alert security staff of incidents.



Improve
Health & Safety
Compliance



Reduce
Operating
Costs



Improve Staff
Productivity



Improve
Operations



Physically Securing CNI Operations

Malicious individuals, organizations, and nation states all seek to benefit from exploiting physical and network-based weaknesses in CNI infrastructures.

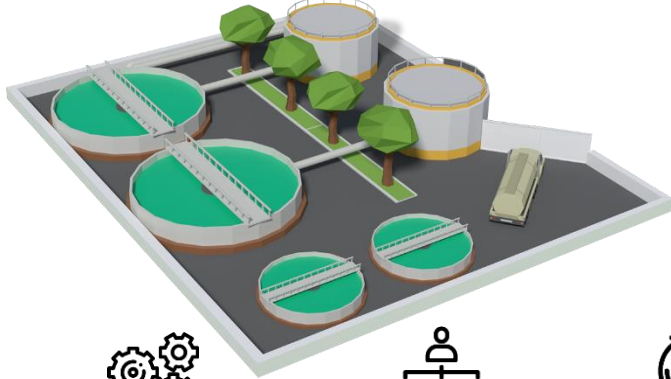
VISuite can monitor key entrances and hazardous areas to verify the identity of personnel and ensuring that the person is cleared, and that security is aware of any unknown persons. Using Unique Face Detection, potentially hostile individuals can be spotted and prevented from learning and exploiting the site even where watchlists are not used.

It also means that alarms can be raised when authorized staff attempt to access the site when they are not required or in an area which is restricted. As soon as an alarm is raised, control room staff can inform relevant security teams to investigate the situation.

Asset Protection

The challenges faced by operators at solar farms, wind farms, power plants, gas terminals and substations, sewage treatment plants and other utility sites will vary greatly. Each site poses its own challenges and face potential threats.

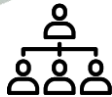
Ipsotek VISuite can be deployed rapidly at each site and connected centrally, allowing easy management and monitoring of these systems. Due to the flexibility of Ipsotek VISuite, the same software can be used for many use cases depending on the area including health and safety lapses such as missing PPE or people entering dangerous areas. VISuite can also help collect data from on site usage and events which would normally be lost, helping to drive operational efficiencies and inform preventive maintenance regimes.



Avoid Incidents



Avoid periods of downtime



Reduce Operating Costs



Improve Security Response Time



© Eviden SAS



Keeping Workers Safe

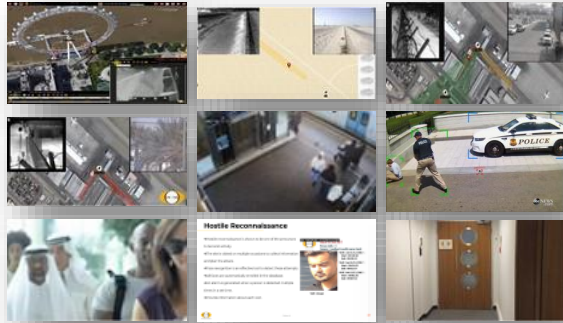
Operational health and safety is a key challenge at all energy and utility sites. While near misses and accidents should be logged, this information is not real-time and combining this information to improve OHSE can be a challenge.

Ipsotek's AIVA system can help monitor violations automatically including PPE detection, slip and fall detection, detecting people getting close to heavy machinery, and other custom detections.

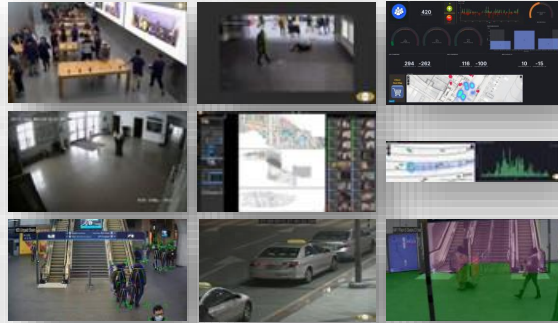
VISuite can generate intuitive reports which help to track and monitor trends and improve health and safety over time. The software can also send alerts to VMS/PSIM systems on site or trigger an alarm, light, or similar direct feedback.

Proven Solutions

SECURITY



BUSINESS INTELLIGENCE



INVESTIGATION & FORENSICS



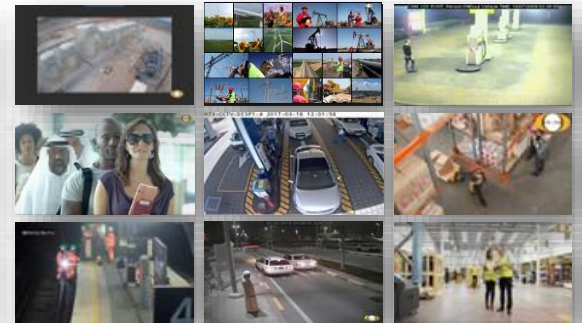
TRAFFIC MANAGEMENT



CROWD MANAGEMENT



OPERATIONS MANAGEMENT



Benefits of Video Analytics

VISuite extracts metadata from RTSP video streams allowing you to improve response times, drive operational efficiencies, and generate new revenue streams. This intelligent capability produces alarms for specific behaviors and events, allows operators to perform forensic searches and generates dynamic dashboards.



Improve Operations Management & Site Automation

- Understand site use to optimize site visits and activity.
- Get automated alerts for events such as intrusion attempts and other risks.



Monitor Health and Safety

- Detect critical events like smoke with existing cameras, allowing you to respond faster.
- Monitor for slips and falls, missing PPE and other health and safety risks.



Reduce Security Risks

- Deploy primary perimeter protection integrated with the ARC, reducing the cost to monitor and secure each site
- Integrate Face Recognition access control to monitor who is on site.
- Search to track across cameras through appearance or face.



Reduce Control Room Overhead in Emergencies

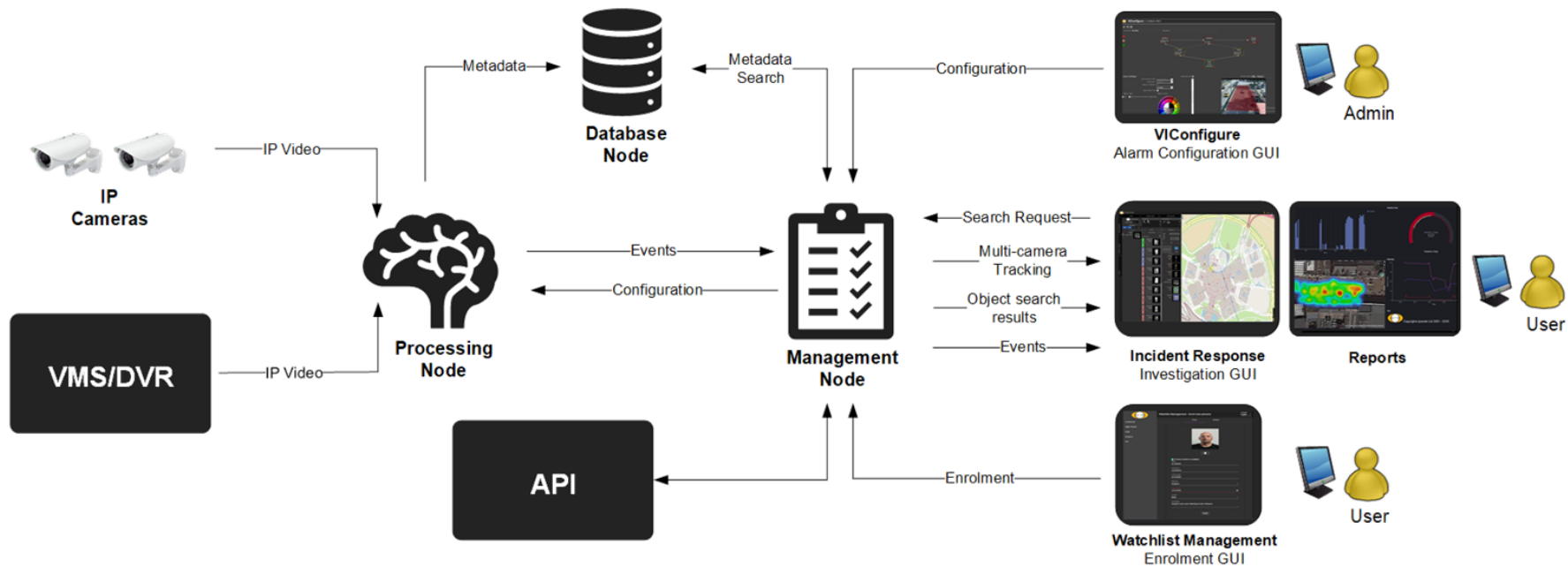
- Detect and track intruders with real-time GIS coordinates and PTZ tracking on existing or new cameras.
- Enable security to resolve the issue faster and reduce overhead.



Solution Verticals



Scalable Architecture



Ecosystem Technology Partners

Video Management Systems (VMS)



Physical Security Information Management (PSIM)



Software License Model

Open, flexible and

One license per camera.

VISuite Investigation

MULTI CAMERA TRACKING - TAG AND TRACK

VISuite Forensics

APPEARANCE, FACE and LICENSEPLATE SEARCH

VISuite AI

VISuite FR

VISuite LPR

ARTIFICIAL INTELLIGENCE

FACE RECOGNITION

LICENSE PLATE RECOGNITION

AI BASED CLASSIFIER

WATCHLIST

WATCHLIST

AI BASED TRACKING

HOSTILE RECONNAISSANCE

HOSTILE RECONNAISSANCE

AI BASED PEOPLE COUNTER

JOURNEY TIME MEASUREMENT

AVERAGE SPEED

UP TO 32 RULES PER CAMERA

MULTI FACTOR AUTHENTICATION

MULTI FACTOR AUTHENTICATION

GEO TAGGING

ID SEARCH

VIOLATIONS EVIDANCE PACK

LIVE ALARMS

AUGMENTED REALITY

AUGMENTED REALITY

STATISTICS REPORTS

DEMOGRAPHICS REPORTS

TRAFFIC REPORTS



EVIDEN



Thank you!

Scan QR code for Business Card



Airport

Airfield

Intrusion Detection
CP Line Violations
PPE Monitoring

Fuel Farm

Critical Area Intrusion
PTZ Tracking
Vehicle Entry Watchlist

Arrivals

Anti-Backtrack
Passenger Counting
Forensic Search
Multi-Camera Tracking

Rail Links

Platform Monitoring
Track Intrusion
(See Rail Bundle)

Perimeter Fence

Intrusion Detection
PTZ Tracking

Bus Station & Transfers

Passenger Counting Reports
Overcrowding (Dispatch Bus)
Wait Time Reports

Cargo

High Value Cargo Approach
Congestion Detection
Access Control
(See Logistics Bundle)

Security Lanes

Queue Monitoring
Lane Bypass
Face Recognition
Time in Security Reports

Departures

Passenger Counting
Passenger Flow Reports & Heatmaps
Proximity Monitoring
Check In Queue Monitoring
Abandoned Object Detection
FR Watchlist
Forensic Search and Tracking

Retail Units

Customer Counting
Passing Trade Conversion Reports
Heatmaps
(See Retail Bundle)

Car Parking

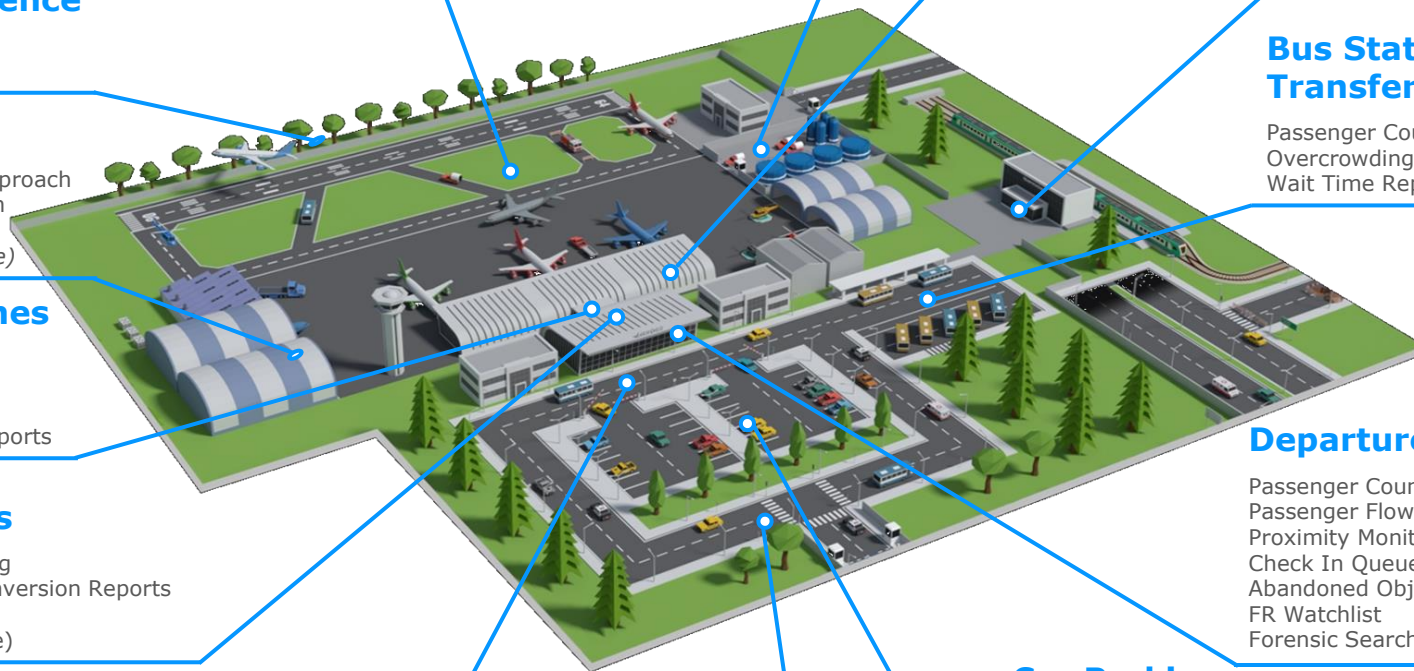
Vehicle Counting
ANPR Vehicle Time in Parking
ANPR Watchlist
Bay Occupancy Estimate
Vehicle Blocking Road
Smoke/Fire Detection

Vehicle Forecourt

Double/Illegal Parking
Vehicle Counting Reports
Vehicle Overspeed
ANPR Vehicle Overstay
Abandoned Vehicle

Road Network

Vehicle Intrusion
Congestion Detection
Stopping on Restricted Route
Person in Roadway
ANPR Time in Area



Datacentres

Server Rooms

- Face Recognition Watchlist
- FR/Access Control 2FA
- Tailgating Detection
- Lone Worker Detection
- Intrusion – Unscheduled/Out-of-Hours
- Visual Smoke Detection (Secondary)
- Forensics & Investigation
- Multi-camera Tracking

Secure Areas

- Intrusion Detection
- Area Usage Reports
- Forensics & Investigation

Entrances

- Pinch-Point People Counting
- Intrusion Out-of-Hours
- Forensic Search
- Face Recognition (FR) Watchlist
- FR Multi-Camera Tracking
- FR Time in Area
- Proximity Monitoring
- Queue Monitoring

Roadways & Vehicle Gates

- License Plate Recognition (ANPR)
- ANPR Multi-Camera Track
- Vehicle Intrusion
- Wrong-way Detection
- Vehicle Speeding Detection
- Abandoned Vehicle Detection

Parking

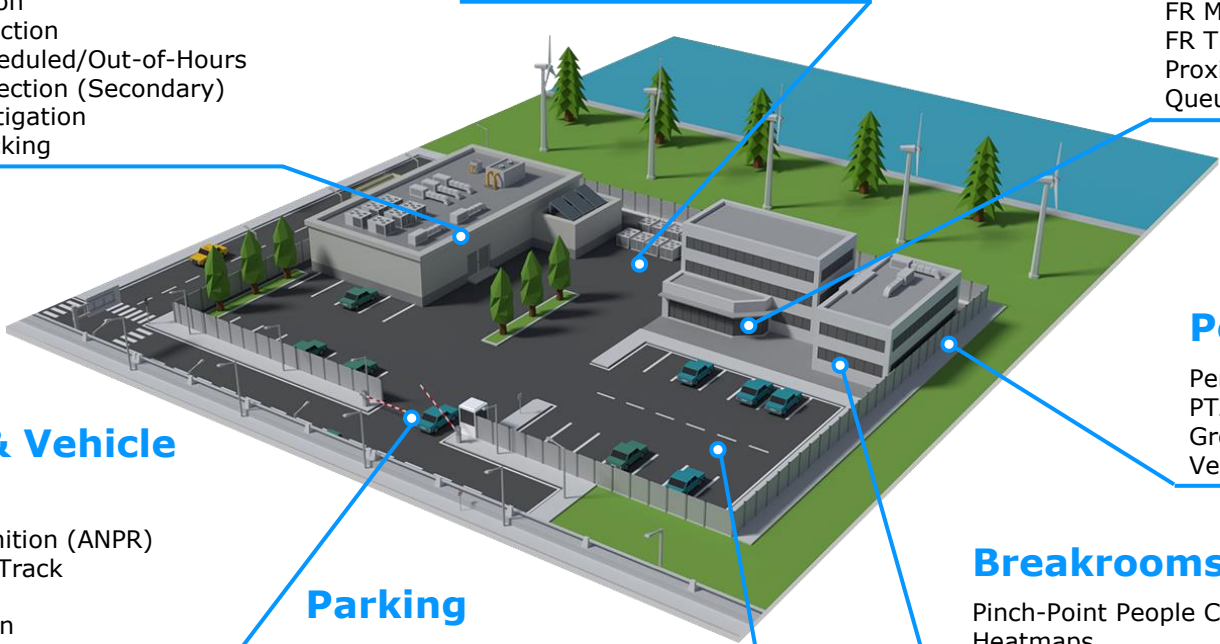
- Vehicle Count Reports
- Current Parking Occupancy
- Vehicle Speeding
- Vehicle Overstay
- Illegal Parking Location
- (Entrance/Footpath/Crossing Blocked)*

Perimeter

- Perimeter Protection
- PTZ Tracking
- Group/Individual Loitering
- Vehicle on Perimeter

Breakrooms

- Pinch-Point People Counting
- Heatmaps
- Queue Management
- Dwell Time
- Intrusion Out-of-Hours



Education

Lecture Halls and Classrooms

- Current Hall Occupancy (Overview)
- Student Counting (Ingress/Egress)
- Abandoned Bag Detection
- Bicycle in Hallway
- Visual Smoke Detection
- Student Attendance/Time in Class

Access Restricted Entrances

- Tailgating Detection
- People Counting
- Intrusion Out of Hours
- Face Recognition Access Control
- 2FA Access Control

Open Campus Entrances

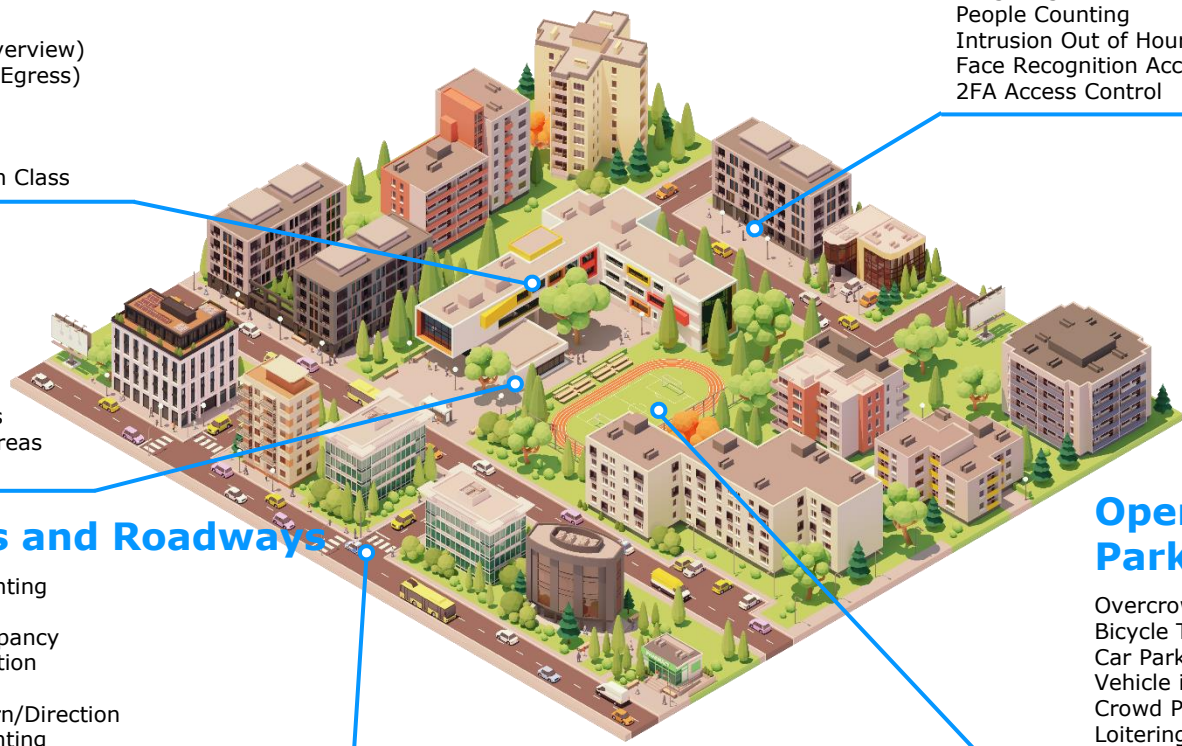
- Student Entry/Exit Counting
- Groups Blocking Entrance
- Groups Loitering Out of Hours
- Vehicle Entering Pedestrian Areas
- Forensic Search

Car Parks and Roadways

- Vehicle Type Counting
- Vehicle Speeding
- Parking Bay Occupancy
- Congestion Detection
- Illegal Parking
- Illegal Vehicle Turn/Direction
- Vehicle Type Counting
- ANPR Watchlist
- Loitering Out of Hours Detection

Open Areas and Parks

- Overcrowding
- Bicycle Too Fast in Student Area
- Car Parked in Road/Restricted Area
- Vehicle in Pedestrian Zone
- Crowd Panic
- Loitering Out of Hours
- Smoke Detection
- Out of Hours Intrusion Detection
- Abandoned Object Detection
- Forensic Search and Investigation



External Asset Protection

- Perimeter Protection
- PTZ Tracking
- Vehicle Intrusion/Illegal Parking
- Intrusion Detection
- Loitering Detection

Asset & Site Monitoring

- Forensic Search
- Out of Hours Intrusion
- PPE Detection
- Slip & Fall Detection
- Smoke Detection
- Live GIS Location Tracking
- Person Running Detection
- Vehicle Intrusion/Speeding

Secure Buildings

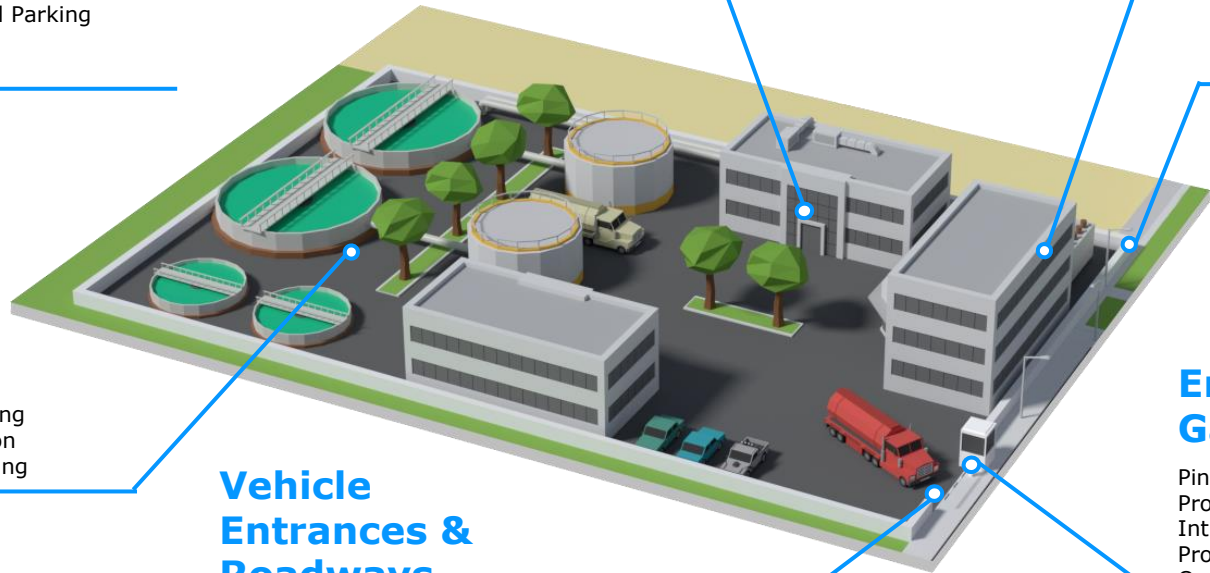
- Intrusion Detection
- Perimeter Protection
- Forensics & Investigation

Data rooms

- Face Recognition Watchlist
- Tailgating Detection
- Intrusion Detection
- Smoke Detection

Perimeter

- Perimeter Protection
- PTZ Tracking
- Vehicle Intrusion/Illegal Parking
- Intrusion Detection
- Loitering Detection



Vehicle Entrances & Roadways

- ANPR Watchlist
- Vehicle Intrusion
- Wrong-way Detection
- Face Recognition
- Abandoned Vehicle Detection

Entrances & Gatehouses

- Pinch-Point People Counting
- Proximity Detection
- Intrusion Detection Out-of-hours
- Proximity Monitoring
- Queue Monitoring

Hospital

Pharmacy & Restricted Areas

Face Recognition For Non-staff Detection
 Loitering Near Staff-only Doors
 Intrusion Out Of Hours
 Forensic Search
 Watchlist Detection

Staff Areas, & Restricted Entrances

2FA Access Control
 Unregistered Person Detection
 Tailgating Detection
 Forensic Face Search

Site Security

Loitering In Key Areas Or Near Staff-only Doors
 Forensic Search
 Unregistered Person Detection
 Intrusion Detection
 Access Out Of Hours
 Watchlist Alarms
 Abandoned Object/Hallway Blocked



Car Parking

Parking Bay Occupancy Reports
 Vehicle Counting & Type Reports
 License Plate Recognition
 Vehicle Overstay
 Illegal Parking

Ambulance Bays

Car parking in ambulance bay/critical routes
 Ambulance Bays Occupied Reports

Roadways + Taxi Rank

Congestion Detection/Reports
 Queue Management at Taxi Rank
 Illegal Parking
 Vehicle Overstay at Drop Off
 Visual Smoke/Flame Detection

Waiting Areas

Social Distancing Compliance
 Face Mask Wearing Compliance
 Unattended Desk/Station alerts
 Patient counting (People in Waiting Areas)
 Slip and Fall Detection
 Queue monitoring © Eviden SAS

Patient Wards

Social Distancing Compliance
 Face Mask Wearing Compliance
 Unattended Desk/Station alerts
 Staff Visit Reports
 Slip and Fall Detection
 Watchlist Alerts (Patient Leaving Site)
 Forensic Search
 Multi-Camera Tracking

Manufacturing

Receiving & Shipping Areas

- Smoke Detection
- Vehicle Speeding
- Person on Forklift Crossing
- Forensics & Investigation

Breakrooms

- Proximity Detection
- Smoke Detection
- Open Area People Counting
- Activity Monitoring
- Forensics & Investigation

Vehicle Areas

- Intrusion Detection
- Smoke Detection
- Wrong-way Detection
- Pinch-Point People Counting
- Abandoned Vehicle Detection

Roadways

- ANPR Watchlist
- Vehicle Intrusion
- Wrong-way Detection
- Face Recognition
- Abandoned Vehicle Detection

Manufacturing Line

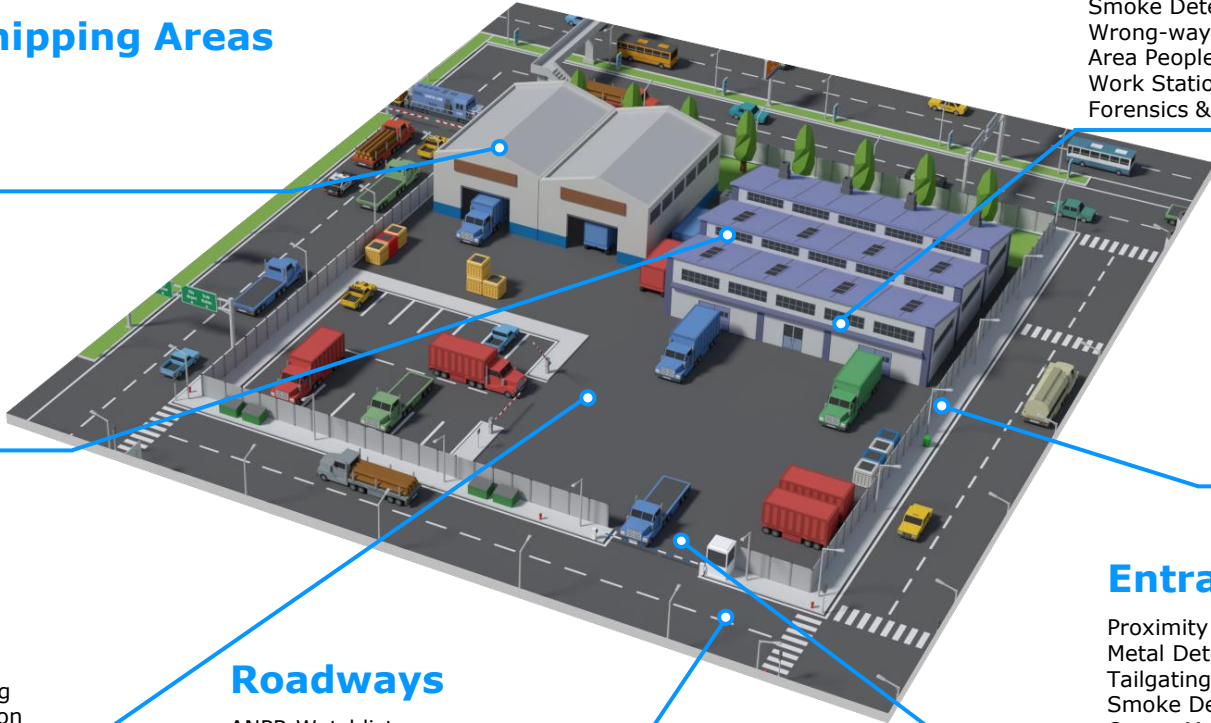
- Person in Hazard Zone
- PPE Monitoring
- Smoke Detection
- Wrong-way Detection
- Area People Counting & Location
- Work Station Activity Monitoring
- Forensics & Investigation

Perimeter

- Intrusion Detection
- Perimeter Protection
- PTZ Tracking
- Forensics & Investigation

Entrances

- Proximity Detection
- Metal Detector Bypass
- Tailgating Detection
- Smoke Detection
- Queue Management
- Wrong-way Detection
- Pinch-Point People Counting
- Open Area People Counting
- Forensics & Investigation



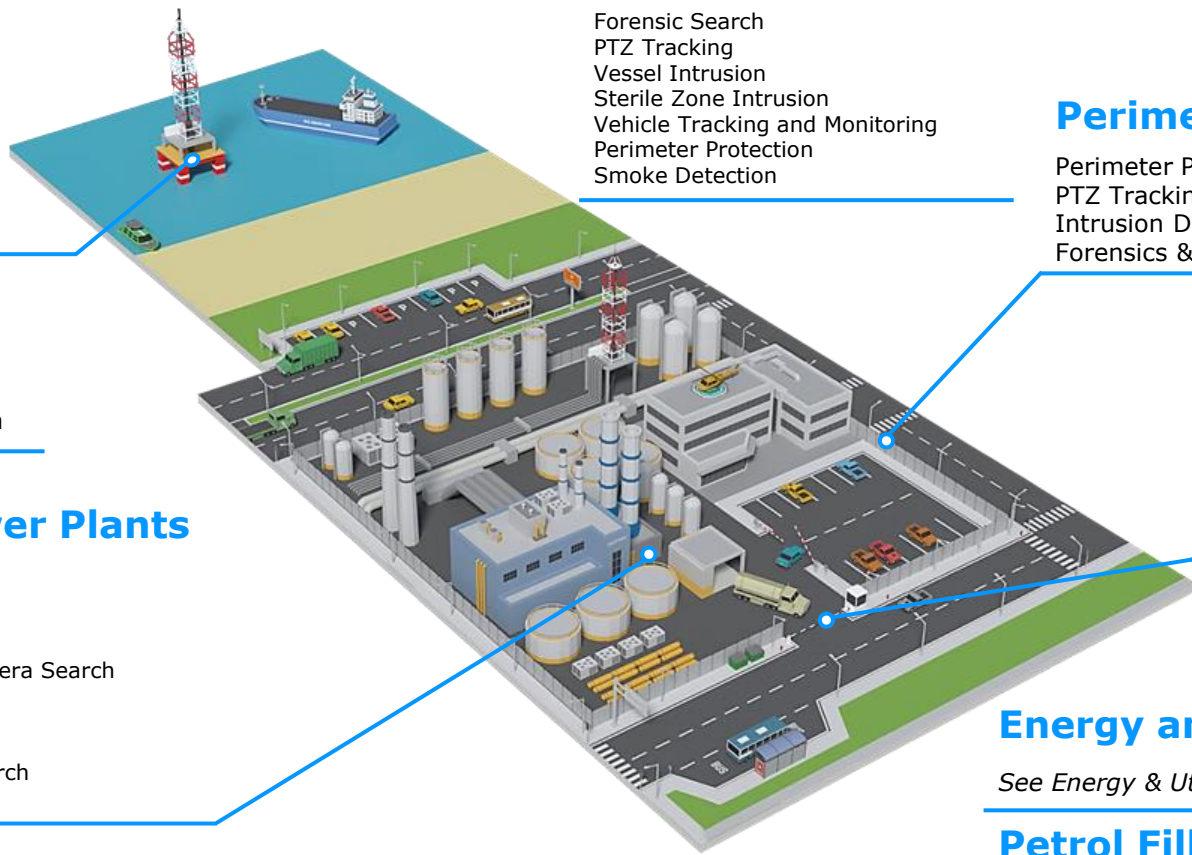
an evidin business

© Evidin SAS

Oil & Gas

Drilling & Extraction Platforms

- Forensic Search
- PTZ Tracking
- Smoke Detection



Oil & Gas Terminals & Ports

- Forensic Search
- PTZ Tracking
- Vessel Intrusion
- Sterile Zone Intrusion
- Vehicle Tracking and Monitoring
- Perimeter Protection
- Smoke Detection

Perimeter

- Perimeter Protection
- PTZ Tracking
- Intrusion Detection
- Forensics & Investigation

Pipelines

- Pipeline Protection
- PTZ Tracking
- Vehicle Approach/Intrusion

Refineries, Power Plants & Other Sites

- Forensic Search
- PTZ Tracking
- Face Recognition & Multi-Camera Search
- PPE Detection
- Face Mask Detection
- Slip & Fall Detection
- ANPR Watchlist & Vehicle Search
- Smoke Detection

Entrances

- Forensic Search
- PTZ Tracking
- Face Recognition
- Smoke Detection
- Anti-Tailgating

Energy and Utilities

See Energy & Utilities Bundle

Petrol Filling Stations

See Petrol Filling Station Bundle



an eviden business

Petrol Filling Station

Forecourt

- Fire Safety Detections
 - Person without Vehicle
 - Vehicle Overstay
 - Smoke Detection
- Vehicle Queue Monitoring
- Vehicle Type Reports
- Abandoned Vehicle Detection
- Group Loitering on Forecourt

Store entrance

- Time in Store
- Store Occupancy
- Unique Visitor Counting
- Watchlist Alerts
- Face Mask Compliance

Retail

- People Counting (By Area)
- People Counting (Occupancy)
- Customer Flow Heatmaps
- Social Distancing Monitoring
- Heatmapping
- Dwell Time
- Forensic Search

Car Wash

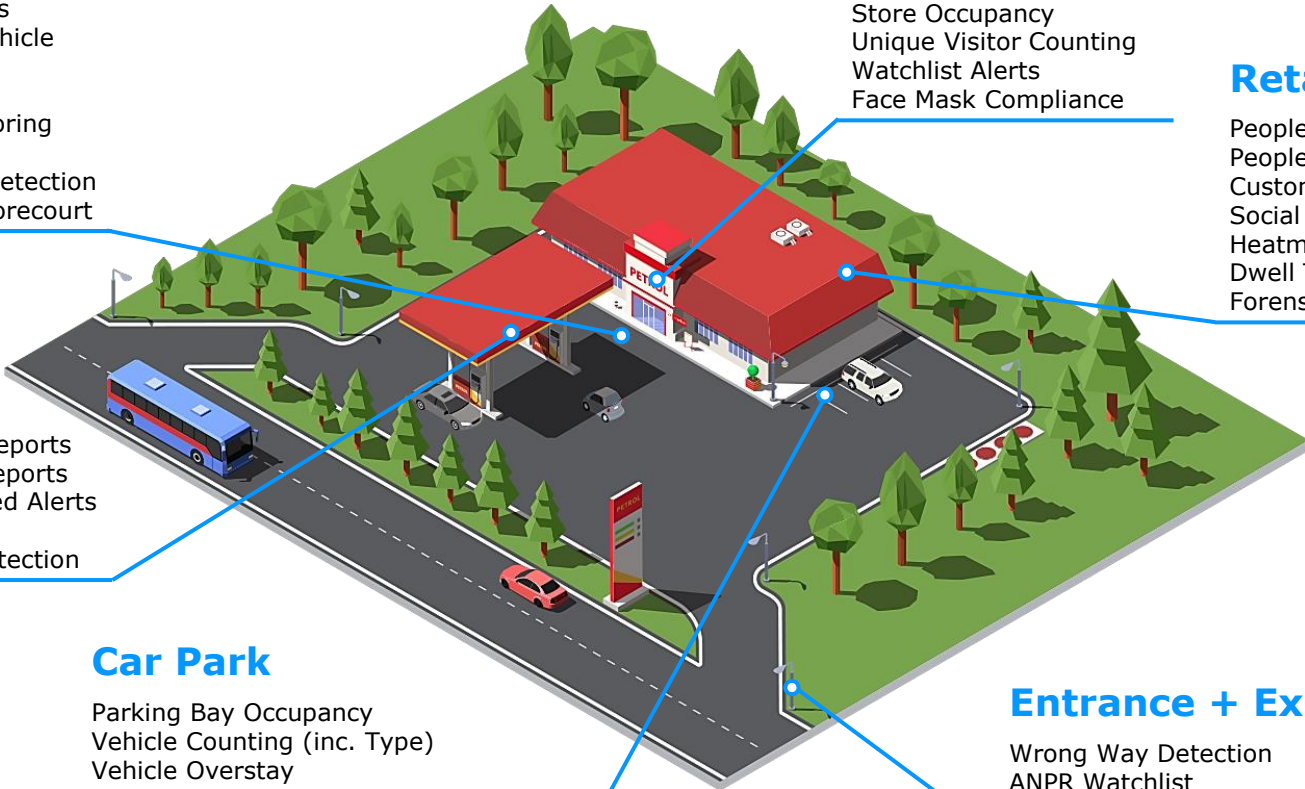
- Car Wash Utilisation Reports
- Vehicle Queue Time Reports
- Queue Length Exceeded Alerts
- Vehicle Type Reports
- Abandoned Vehicle Detection

Car Park

- Parking Bay Occupancy
- Vehicle Counting (inc. Type)
- Vehicle Overstay
- Person Loitering Near Vehicles
- Time in Bay Reports

Entrance + Exit

- Wrong Way Detection
- ANPR Watchlist
- Vehicle Type Detection



Prison

Inmate Areas

Cell Blocks

- Time in Area Monitoring
- Face Detection – Common Associates
- Weapons Detection

- People Counting (Overview)
- Groups Forming/Loitering
- Forensic Search
- Social Distancing Reports
- Smoke Detection

Visitors Area

- Intrusion Detection
- Forensic Search
- Social Distance Monitoring
- Intrusion/Proximity Violations
- Anti-Tailgating
- 2FA Access Control

Exercise Yards

- Yard Usage Heatmaps
- Loitering Time Heatmaps
- Person Entering Sterile/High Risk Area
- Internal Perimeter Monitoring
- Smoke Detection

Entrances & Exits

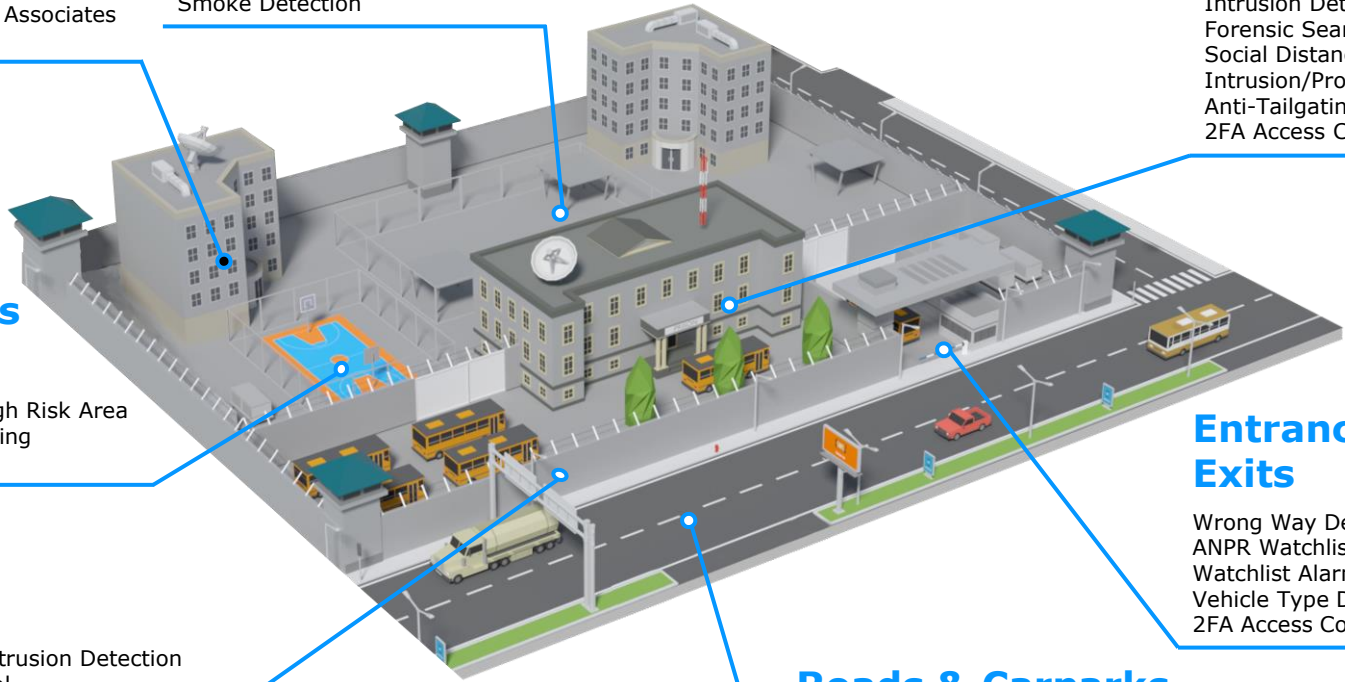
- Wrong Way Detection
- ANPR Watchlist
- Watchlist Alarms (VIP/Threat)
- Vehicle Type Detection
- 2FA Access Control

Perimeter

- Thermal Perimeter Intrusion Detection
- Automatic PTZ Control
- People Approaching/Leaving Site

Roads & Carparks

- Illegal Parking
- Vehicle Overspeed
- Forensic Search
- Abandoned Vehicle Detection



Railways

Track Monitoring

Person on Track
Fence-line Breach

Service Areas

Intrusion Detection
PPE Detection
Site Usage Reports

Walkways

Crowd Density
Social Distancing Reports
Face Mask Detection
Passenger Counting Reports
Abandoned Objects

Platform

Real Time Count Heatmaps
Social Distancing
Overcrowding
Yellow Line Intrusion
Track Intrusion

Entrances

Face Recognition
Mask Detection

Concourse

Social Distancing
Intrusion Out of Hours
Abandoned Object
Overcrowding
Loitering
Queue Management

Access

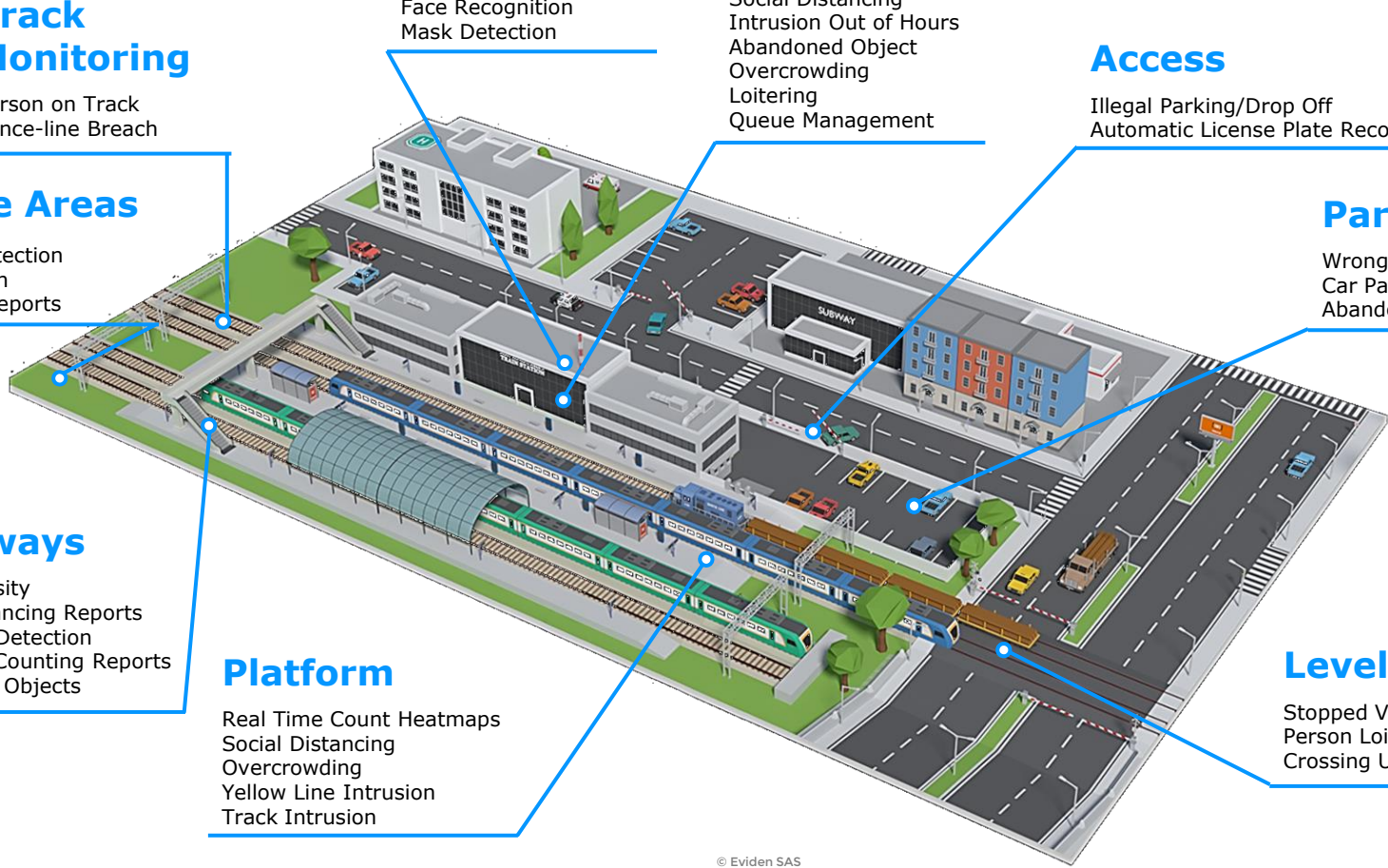
Illegal Parking/Drop Off
Automatic License Plate Recognition

Parking

Wrong Way (Vehicle)
Car Park Occupancy
Abandoned Vehicle Detection

Level Crossings

Stopped Vehicle
Person Loitering on Track
Crossing Usage Reports



Retail

Outside Store

- Passing Trade Conversion Reports
- Groups Loitering
- Bicycle on Pavement
- Forensic Search

Parking

- Vehicle Count Reports
- Current Parking Occupancy
- Vehicle Speeding
- Vehicle Overstay
- Abandoned Vehicle Detection

Checkouts

- Queue Length Reports
- Average Queuing Time
- Maximum Queuing Time
- Queue Abandon Rates
- Queue Length Exceeded Alerts
- Staff Time At Desk Reports

Warehousing/Back of House

- Intrusion Detection
- High Value Goods Protection
- Smoke Detection



Entrances

- Unique Visitor Counting
- Customer Time in Store/Mall
- Demographic Reports
- Watchlist Alarms (VIP/Threat)
- Face Blurring
- Face Mask Detection

Retail Space

- Customer Counting (By Area)
- Customer Counting (Occupancy)
- Customer Flow Heatmaps
- Social distancing monitoring
- Heatmapping
- Dwell Time
- Forensic Search

Roadway

- Passing Vehicles Report
- Congestion Detection
- Stopped Vehicle Detection
- Delivery Van/Truck Stopped

Petrol Filling Stations

See Petrol Filling Station Bundle



Road

Bridges

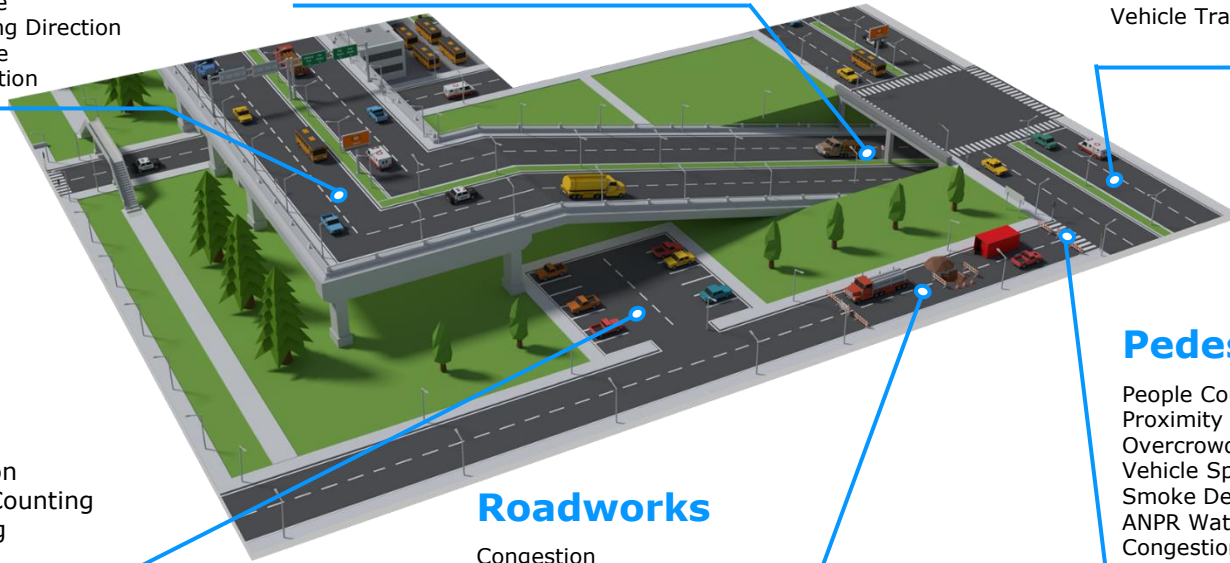
- Person or Bike Intrusion
- Vehicle Type Counting
- Congestion Detection
- Smoke Detection
- Speeding
- Vehicle Stopped on Bridge
- Vehicle Travelling in Wrong Direction
- Person Loitering on Bridge
- Abandoned Vehicle Detection

Tunnels

- Person or Bike intrusion
- Vehicle Type Counting
- Congestion Detection
- Smoke Detection
- Speeding
- Vehicle Stopped in Tunnel
- Vehicle Travelling in Wrong Direction
- Abandoned Vehicle Detection

Major Roadways & Highways

- Speeding
- Congestion
- Illegal Stop/Turn
- Illegal Parking
- Vehicle Type Counting
- Smoke Detection
- Vehicle Travelling Wrong Way



Carparks

- Congestion
- Illegal Parking
- Illegal Turn
- Vehicle Wrong Direction
- Parking Vehicle Type Counting
- Parking Bay Monitoring
- ANPR Watchlist

Roadworks

- Congestion
- Intrusion Detection
- Vehicle in Restricted Area
- Smoke Detection

Pedestrian Crossings

- People Counting
- Proximity Detection
- Overcrowding
- Vehicle Speeding
- Smoke Detection
- ANPR Watchlist
- Congestion Detection

SeaPort

Rail Link

Intrusion Detection
Activity Monitoring
Person/Object on Tracks

Internal Roads

Intrusion in AGV Zone
PPE Monitoring
Activity Reports
Smoke Detection

Harbour

Vessel Intrusion
PTZ Tracking
PPE Monitoring
Person in Hazard Zone
Activity Reports

Customs

Vehicle Queue Monitoring
ANPR
Face Recognition

Storage

Intrusion Out of Hours
Smoke Detection
Forensic Search

External Roads

Illegal Parking/Stop
Illegal Turn/U-Turn
Congestion Reports & Alarms
ANPR
Abandoned Vehicle Detection

Perimeter Fence

Intrusion
PTZ Tracking
GIS Alerts

Gates

Face Recognition
Anti-Tailgating (Person)
Vehicle Counting
ANPR Watchlist

Warehouses

Intrusion Out of Hours
Social Distancing
Smoke Detection
Forensic Search



Smart City

Venues and Landmarks

- Healthy Buildings
 - Intrusion Detection
- Protect well known sites from intrusion, theft, and other risks. Manage the spread of coronavirus and monitor site use.

Public Spaces

- Crowd Management
- Respond to anti-social behavior faster and direct operators focus to what matters most. Understand how people use the space and optimize for health, safety, and security.

Stadiums + Arenas

See Stadium Bundle

Seaport

View Seaport Bundle

Airport

See Airport Bundle

Transportation Links

- Intrusion Detection
 - Crowd Management
- Track crowd flows and identify high risk issues faster.

Major Events

- Crowd Management
- Real time feedback to help manage crowds at major events and reduce the response time to incidents such as overcrowding, blockages, and vehicles in restricted areas. Understand route use to prepare for future events.

Road Network

- Traffic Management
- Detect common incidents and issues on roadways to help redirect traffic and address the issue faster.

Bridges

- Traffic Management
 - Intrusion Detection
- Monitor traffic use on bridges and keep roadways safe and free-flowing. Prevent unauthorized access to the bridge or roadway.

Car Parks

- Traffic Management
- Monitor parking use to generate reports and live alarms for possible issues.

Tunnels

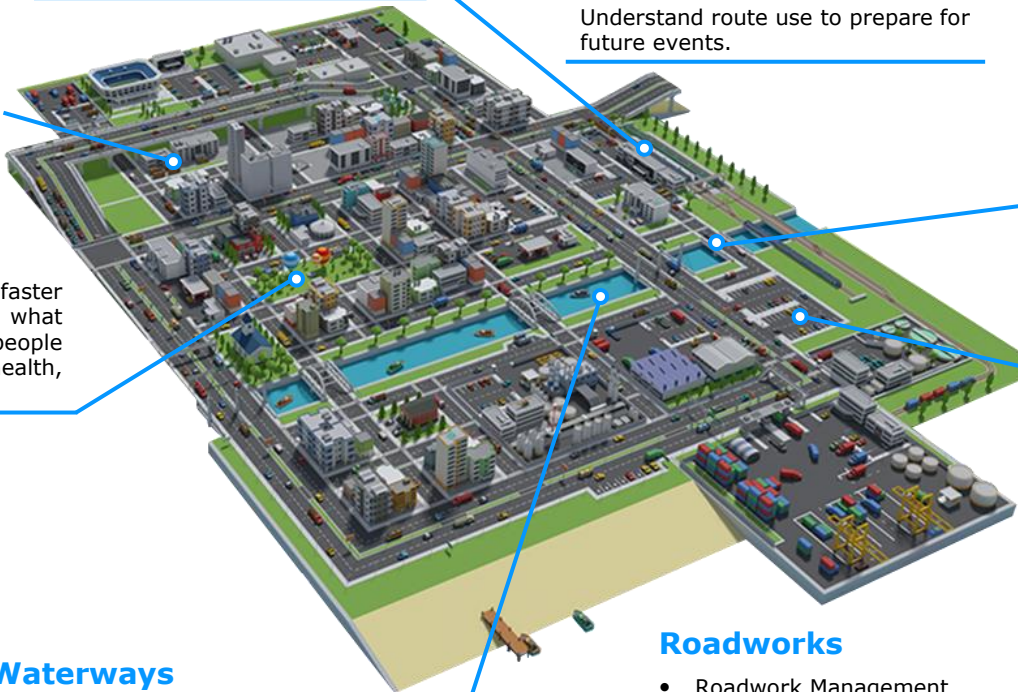
- Traffic Management
 - Intrusion Detection
- A range of roadway solutions to reduce the response time to incidents and congestion and keep tunnels safe and operational.

Roadworks

- Roadwork Management
- Re-deployable licenses to report on roadwork construction times. Assist in lane rental billing. Monitor activity around roadworks including vehicle speeds and congestion.

Waterways

- Intrusion Detection
- Rapidly detect vessels in unauthorized areas and people approaching high-risk locations. Option for immediate audio warnings.



Stadium

Stadium Perimeter

Intrusion Detection
PTZ Tracking
GIS Alerts

Staff Entrances

Face Recognition Watchlist/
Access Control

Staff & VIP Areas

Watchlist
Crowd Monitoring Proximity Alerts & Reports

Lobbies, Hallways & Ticketing

People Count in Area
People Ingress/Egress Reports
Heatmaps
Overcrowding Alerts
Queue Monitoring
Crowd Panic
Restricted Area Intrusion

Entrances

FR Watchlist
Facemask Detection

Bridges & Visitor Access

Pinch Point People Counting
Heatmaps
Proximity Monitoring

Stadium Approach

People Counting
Overcrowding
Queue Monitoring
Crowd Panic

Retail Units

Customer Counting
Passing Trade Conversion Reports
Heatmaps
See Retail Bundle

Roadways & Vehicle Access

Vehicle Intrusion
Congestion
Illegal Stopping/Parking
Taxi Bay Monitoring
Vehicle Type Reports

Parking

Congestion
Parking Bay Occupancy
Illegal Parking
Illegal Turn/Direction
Parking Vehicle Type Counting
ANPR Time in Area & Overstay
ANPR Watchlist

Transportation Links

People Counting
Queue Monitoring
Abandoned Object
FR Watchlist/Reconnaissance
Forensic Search and Tracking



© Eviden SAS



Warehouses & Logistics

Breakrooms

- Proximity Detection
- Smoke Detection
- Open Area People Counting
- Activity Monitoring
- Forensics & Investigation

Pick Area

- Proximity Detection
- Smoke Detection
- Wrong-way Detection
- Open Area People Counting
- Work Station Activity Monitoring
- Forensics & Investigation

Goods Area

- Smoke Detection
- Vehicle Speeding
- Forensics & Investigation

Perimeter

- Intrusion Detection
- Perimeter Protection
- PTZ Tracking
- Forensics & Investigation

Vehicle Area

- Intrusion Detection
- Smoke Detection
- Wrong-way Detection
- Pinch-Point People Counting
- Abandoned Vehicle Detection

Roadways

- ANPR Watchlist
- Vehicle Intrusion
- Wrong-way Detection
- Forensic Reports
- Face Recognition
- Abandoned Vehicle Detection

Entrances

- Proximity Detection
- Metal Detector Bypass
- Tailgating Detection
- Smoke Detection
- Queue Management
- Wrong-way Detection
- Pinch-Point People Counting
- Open Area People Counting
- Forensics & Investigation

